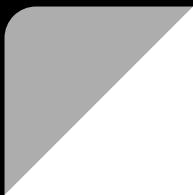


Immaculate Heart of Mary Beginnings and Construction

By Alex Omweri



Beginnings and Construction

IHM's impact in the Grand Rapids community is traced back to its roots. IHM wasn't always the church it is today, but with the effort and support of parishioners since 1949, it was able to slowly and steadily move into the next phase of growth.

- IHM grew rapidly throughout the '70s, and into the late '80s when there was a renovation at the church.
- IHM's history goes back to 1949. That is when our legacy started, and continued to grow from there.
- To understand what our parish history you don't need to look around, but you need to look back. IHM has been through a very successful history of continuous growth and support which has set us in a position to make a real change in the community.
- We thank the parishioners who helped support Immaculate Heart of Mary in its early stages. Because of their commitment IHM ended up as a successful and fruitful organization based on God's love and mercy.



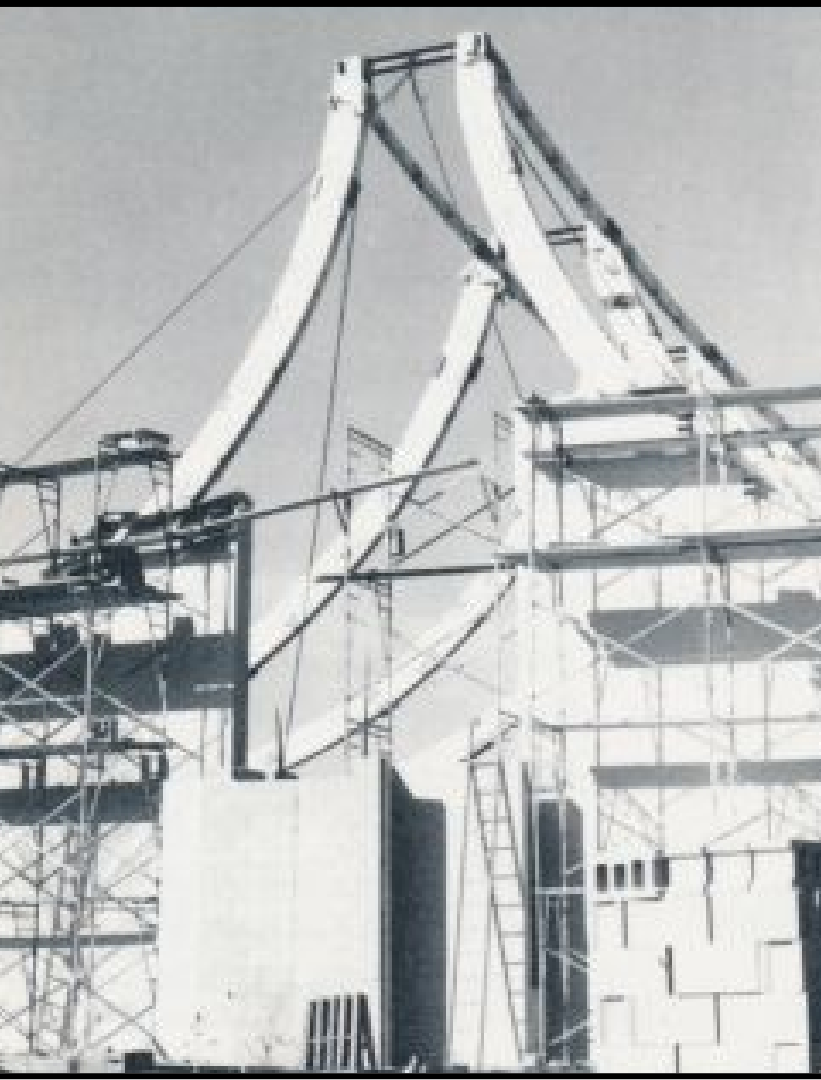
The first Mass in the original church was said on April 3, 1949.



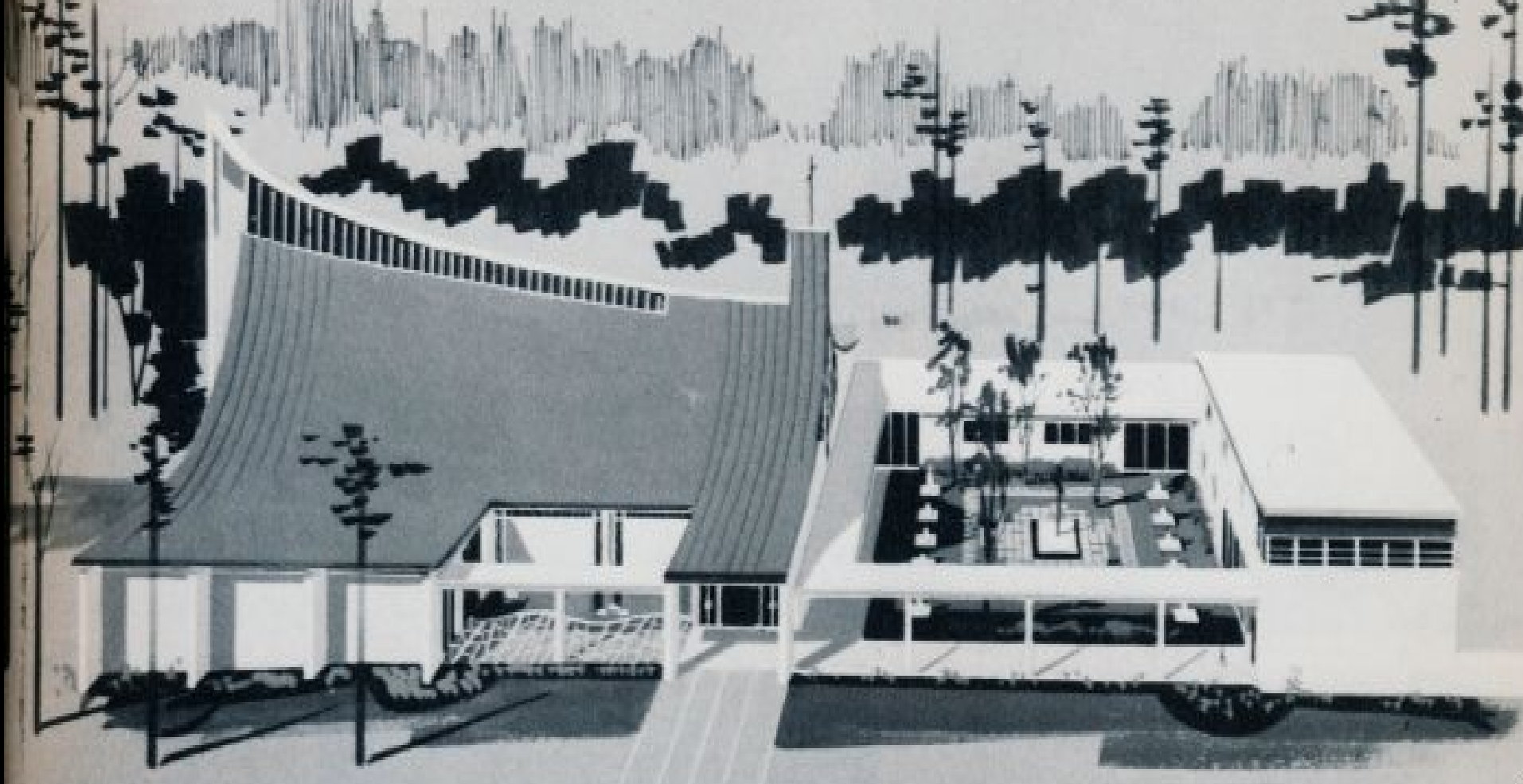
The original church after a remodeling, renovation and an extension.



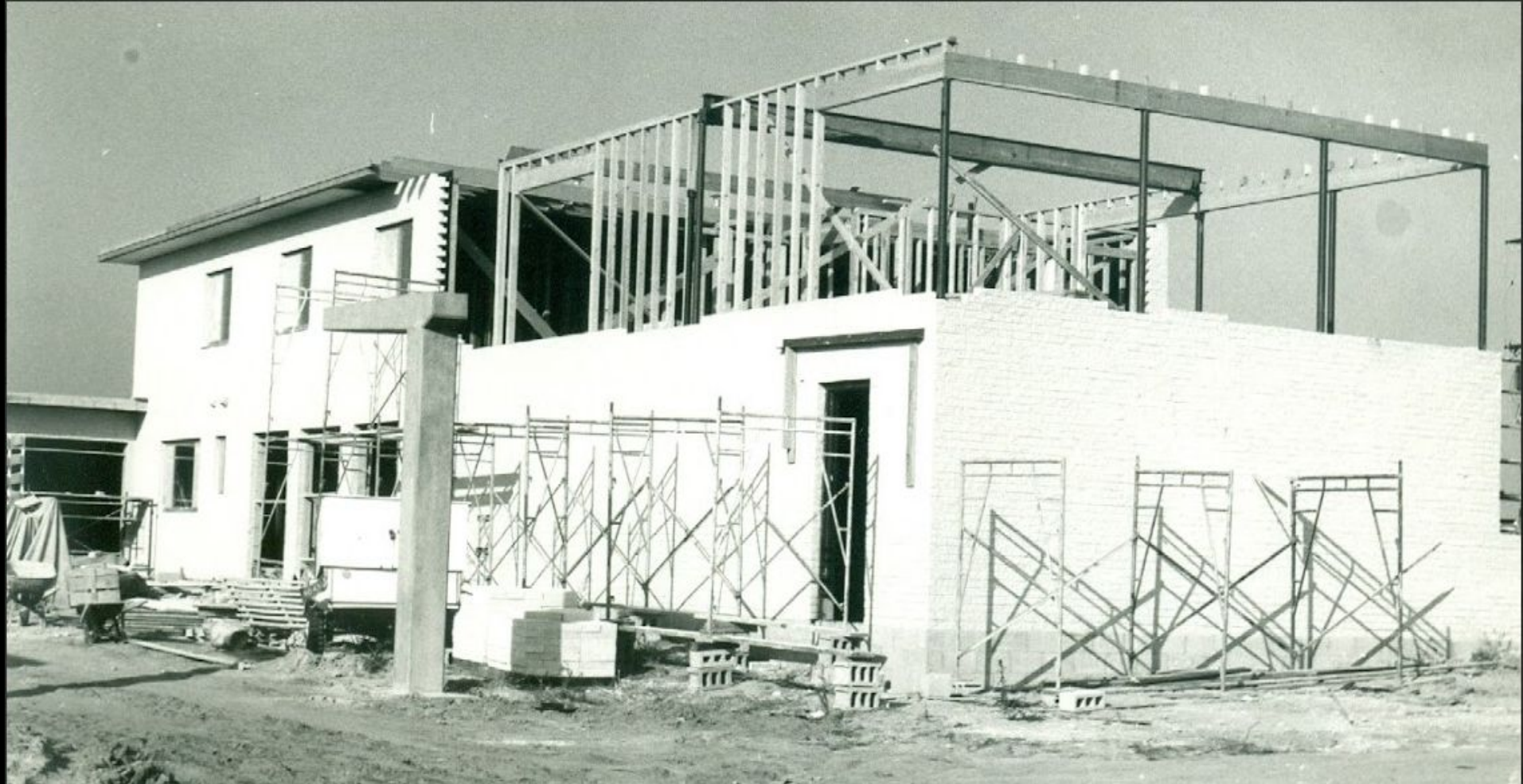
IHM School after the original four-classroom section and two additions.



The permanent church we worship in today was constructed during 1965-'66.

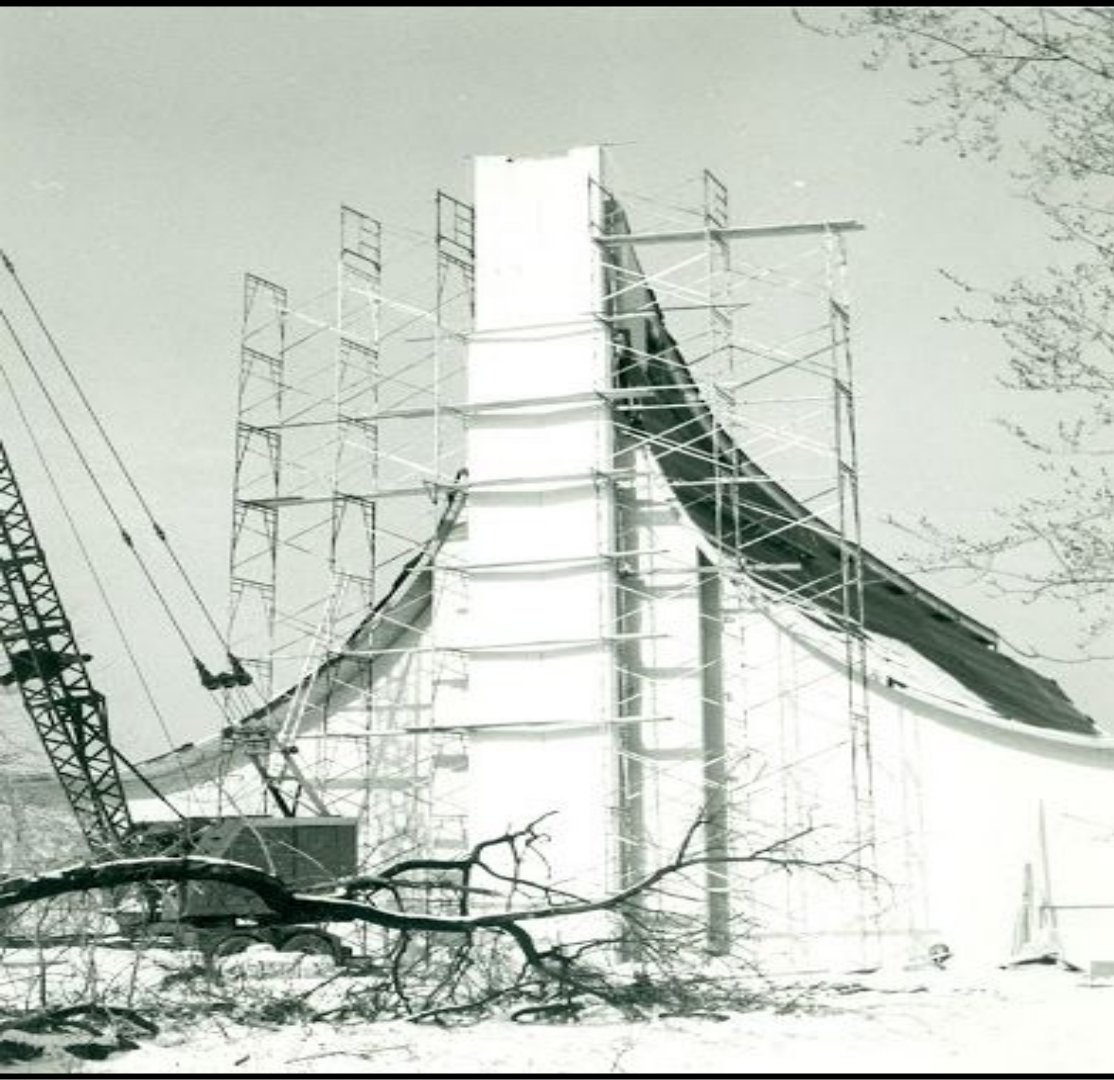


Architect Charles Hannan's design for the permanent church.



The rectory under construction in 1966.

Front view of the new church in 1966.



The following picture, was taken in 1966 showing the interior of the church during construction.



Interior angle of the previous picture from 1966.



The church, rectory and parish office after roofing was installed in 1966.



Fr. Gerry Flater, OMI broke ground for the Parish Center in 1980.

Credits

- Slideshow created by Alex Omweri
- Photos courtesy of Mrs. Deb Moore and the IHM Archives